



Training Support Center (TSC)

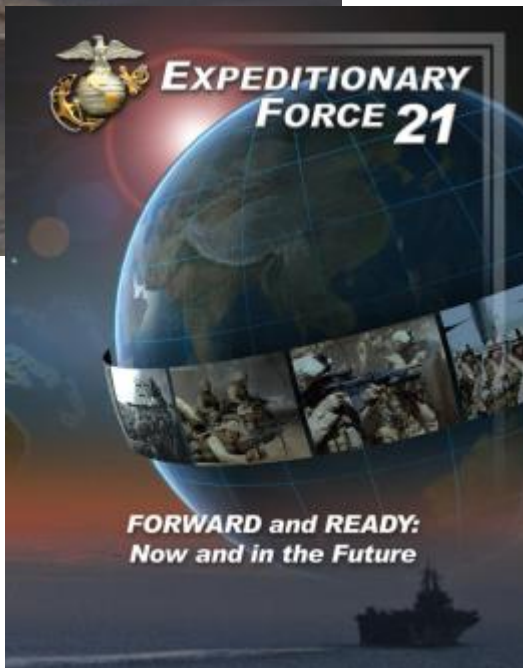
Camp Pendleton

MARCH 2015

UNCLASSIFIED



Foundation



- Marine Corps Vision & Strategy 2025 IPG directs establishment of “training and education support centers at all major Marine Corps installations IOT *improve TECOM support to home station training.*”
- Expeditionary Force 21 gives guidance for innovation showing ROI to develop needed capabilities.

“... Development of doctrine and training...”



Training Support Center Mission



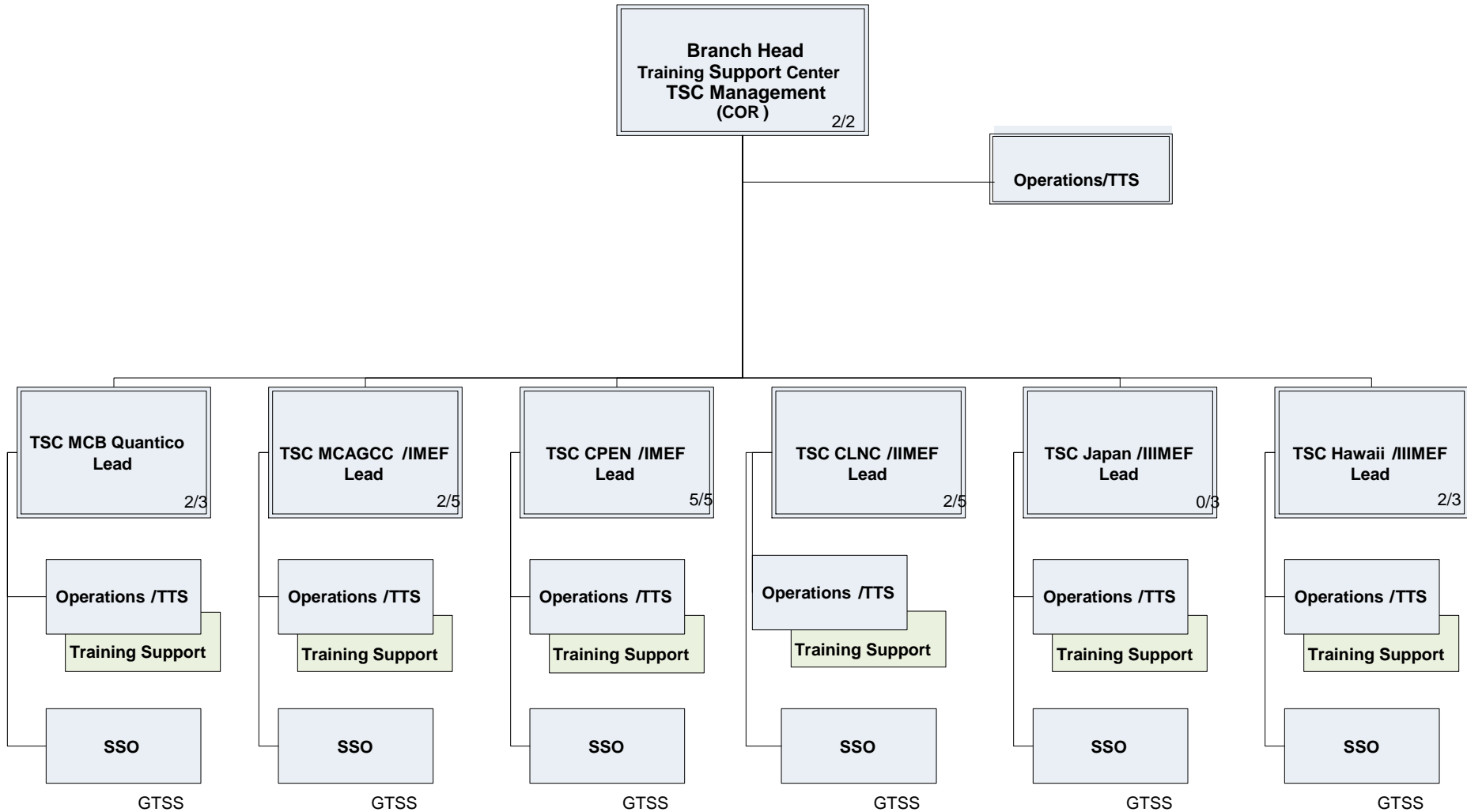
The TECOM Training Support Center provides unit training/exercise design expertise and assistance to the operating forces, recommends the sequencing of use and optimizes integration of TECOM training systems and capabilities ISO Force Generation Process Phase II, III, and IV training, and provides contractual technical oversight of fielded live training systems IOT accomplish effective and efficient TECOM support to Home Station Unit Training.

References:

- 1) Marine Corp Vision and Strategy IPG 2025, 18 June 2007 (pg 10)
- 2) Marine Corps Concepts and Programs 2014
- 3) MCO 3502.6A, MARINE CORPS FORCE GENERATION PROCESS, 07 June 2013
- 4) TECOMO 3502.2, MAGTF TP TRANSITION PLAN, 26 February 2013
- 5) TECOM Organization Manual, 05 December 2012
- 6) CNA Study "Compressed Training Time" Feb 2012



TECOM TSC



Legend

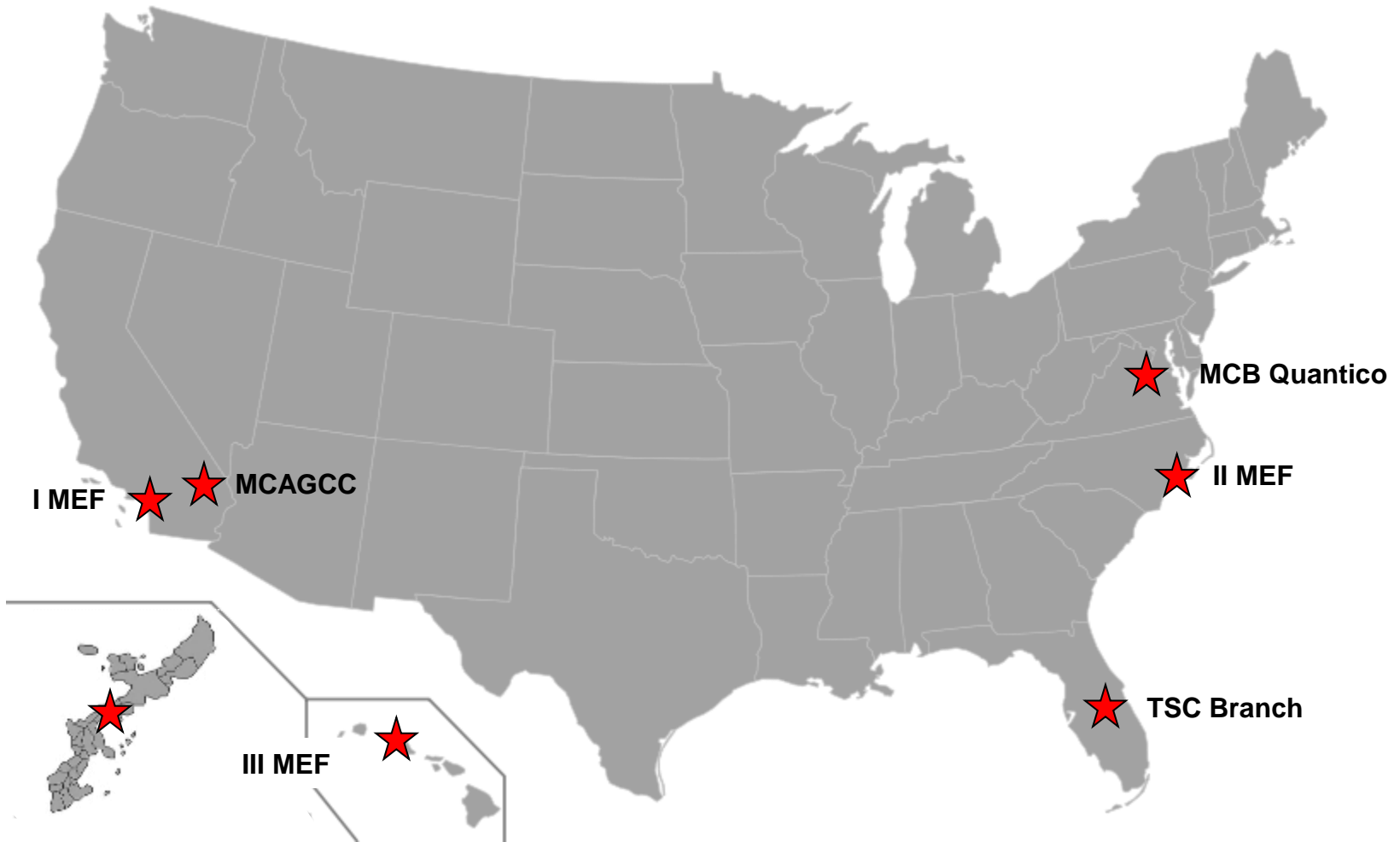
Blue – GS

Green – Contractor Support

UNCLASSIFIED



TSC Homestation Locations





Training Support Center Benefits for Home Station Training



Training Time:

- Increases Unit Training efficiency
 - Saves unit planning time for training (ref: Center for Naval Analysis)
 - Tightly links training events to Cmdr's guidance and approved METL
 - Work closely with PMTRASYS on contract oversight and training system fielding during declining budgets
 - TSC-Unit collaborative process to best support Unit Training

Training Resource Optimization:

- Increases Unit Training effectiveness
 - Scenario based training designed IAW unit commander's guidance- the best training is done "in context" to a relevant situation
 - Integrates training systems, devices, ranges & training environments most beneficial to unit's training objectives
 - Includes multiple collective tasks in an integrated fashion, vice sequentially to best replicate the complex challenges of real operations
 - Local lessons learned- *training stakeholders' OODA Loop* (example ITESS 2)
 - Training exercise (scenario/MSEL) design software [RIPPLE] as GFE

Training Support Adaptation/Agility:

- Doctrine and Standards based training construct
 - Force Generation Process and MCTIMS Task mapping assistance
 - Reinforce TMIC/OTI/OTC training principles (MAWTS-1/MCTOG/MCLOG)



TSC CPEN Mission



CPEN TSC will:

- Assist MCB G3/5 by providing COTR support for ground training and training systems; assist with training capabilities planning, programming and resource analysis; and assist with unit training and exercise support
- Provide IMEF with integrated and coordinated TECOM Support for PTP training

In Order To:

- Provide Marines with the best training environment possible and support the training objectives stated in the CMC Vision and Strategy 2025.



Directives



TECOM RTAM / Installation MOA

- TSC support to MCI-W / Base G3/5
 - Exercise PIng, Design, Execution spt (TSD)
 - Resource Management and PIng (RTAMD)
 - Contract Surveillance (RTAM / RTAMD)

TECOM Decision Memo; CG IMEF Trng Guidance Msg

- TSC support to IMEF G3T
 - Track and update service training requirements
 - Coordinate integrated TECOM support for Unit PTP
 - Supported / Supporting relationship for local TECOM resources
 - Identify and coordinate external training resources
 - JIEDDO, JCOE, etc



TSC CPEN Core Tasks



System Support:

- Conduct contract surveillance for designated programs (RTAM)
 - Monitor contract performance, system sustainment and availability
- Integrate into Base training system management architecture IOT support contract execution
 - Track and capture system usage data
 - Provide reports on contract work performance and funds obligated
 - Coordinate with Base, RTAM and PM TRASYS personnel

Planning & Analysis:

- Assist Base with resource analysis / assessment
 - Determine training resource gaps, redundancies, requirements
 - Support Range instrumentation evolution
- Assist Base with DOTMLPF assessments during requirements development
 - Support requirements ID, fielding, sustainment and life cycle replacement
 - Support contract modification / recompetite process



Core Tasks (cont.)

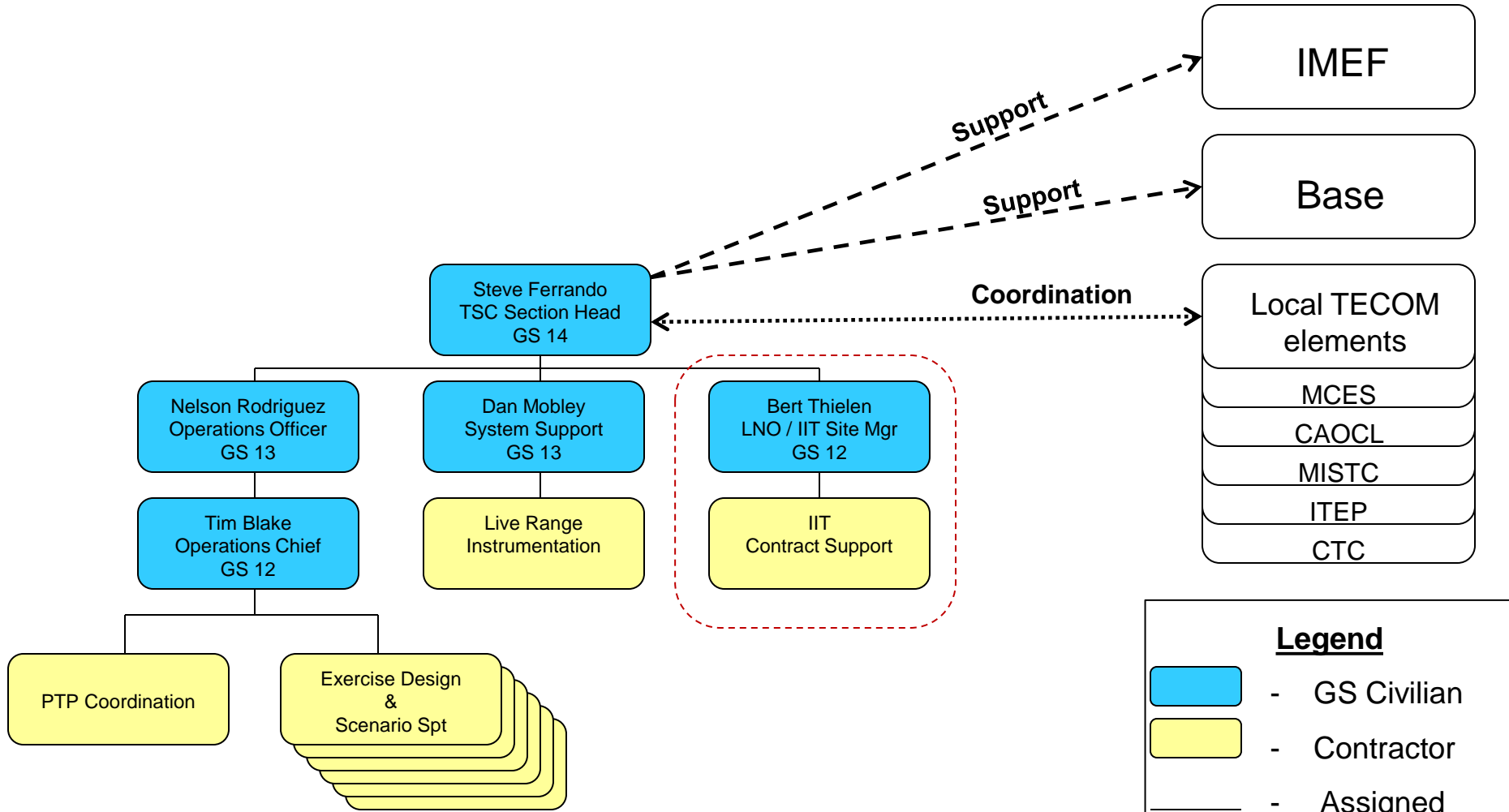


Operations:

- Assist Base O&T with support to unit training events
 - Facilitate exercise planning, design and scenario support
 - Trng Obj, METL, Task linkage to exercise concept
 - Product development to support exercise framework (setting, events, Intel products, RP bios, etc)
 - Facilitate exercise resource integration and training execution
 - RP contract coord (SOW, funding coord, surveillance)
 - Training devices, atmospherics, ranges, TAs, training systems, COIN enablers
 - Exercise control products / assistance (MSELs, RIPPLE threads, narratives)
 - AAR products
- Assist I MEF with unit PTP training plan development
 - Clarify deployment requirements in coordination with I MEF
 - ID TECOM approved resources to meet SVC, MEF requirements
 - Single point of coordination for TECOM support to Home Station Training
 - Recommend sequencing and integration of resources
 - Provide PTP feedback / recommendations to TECOM G3



TSC Camp Pendleton

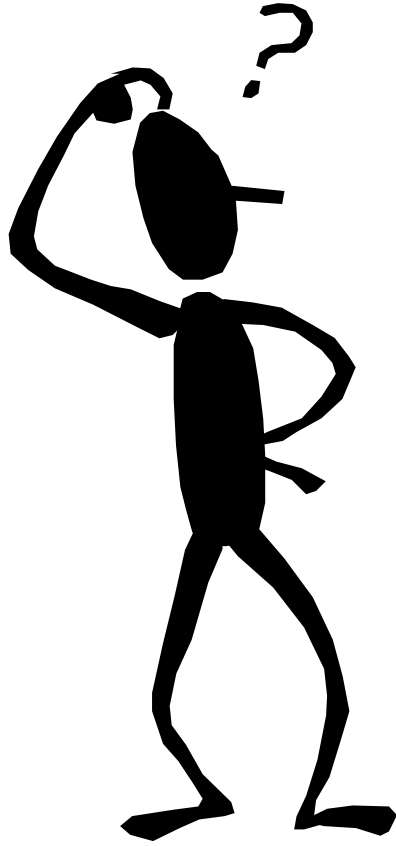


Legend

- GS Civilian
- Contractor
- - Assigned
- - - -> - Support
- <- - - - -> - Coordination



Questions?





Common Misperceptions



Things CPEN TSC **DOES NOT** do:

- Conduct formal training
 - TSC will facilitate unit training by providing various support products and help, but does not have any expertise to “conduct” training.
- Conduct unit assessments / build unit TEEPs
 - These actions are inherent responsibilities of the Unit Commander and the Chain of Command.
- Evaluate unit training
 - This is done as part of formal training venues or service supported training events such as ITX, MTX or LSE; TSC does neither of these
- Schedule training events
 - This is done by units in direct coord with the training resource provider
- Validate or approve training requirements
 - Done by MARFORs via the MEFs to PP&O
 - TECOM develops training solutions to requirements (when appropriate)
 - TSC informs MEF units about the resource solutions



TSC CPEN POC List



TSC Head (763-7996)

Steve Ferrando

Operations (763-8243 / 8244)

Nelson Rodriguez

Tim Blake

Todd Luginbuhl

Sean Walker

Chuck Colleton

Eric Loya

Kevin Kylis

Steven Taylor

RIPPLE FSR (763-8243)

Nick Clark

Contracts / Sys Spt (763-8244)

Dan Mobley

System Planning (763-6920)

Les Wheeler

IIT Site Mgmt (763-4835)

Bert Thielen

Matt Fennell

Jonell Laxa



Range and Training Area Capabilities



Combat Training Environments

- MOUT Sites
- Infantry Immersive Trainer
- Convoy Ops Courses
- Shoot Houses
- Ship on Land
- Airfield Raid Facilities
- Urban CAS
- FOBs/ECPs/VCPs
- C-IED Training Lanes
- Search Houses
- AAR Facilities

Range Instrumentation

- Force on Force
- Tactical Video Capture System
- Avatars
- SITE
- RISON

Range Training Aids and Devices

- Targets
- Automated Targetry
- Battlefield Effects Simulators
- Atmospherics
- IIT Role Players

Range Services Support

- West Coast COMS
- East Coast COMS
- 29 Palms COMS
- RTISS
- IIT SMEs

Training Support Centers

- Optimize and operationalize home station service level training resources employed in support of unit training.
- Provide integrated and coordinated TECOM Support for PTP/MAGTF-TP training.
- Provide exercise design, scenario development, and Training Support Packages linked to Commander's Training Objectives.

TSC BRANCH – William Macak / william.macak@usmc.mil

MCAGCC – Marc LaClair/ marc.j.laclair@usmc.mil

MCBQ – Joseph Dennison / joseph.dennison@usmc.mil

CPCA - Stephen Ferrando / stephen.ferrando@usmc.mil

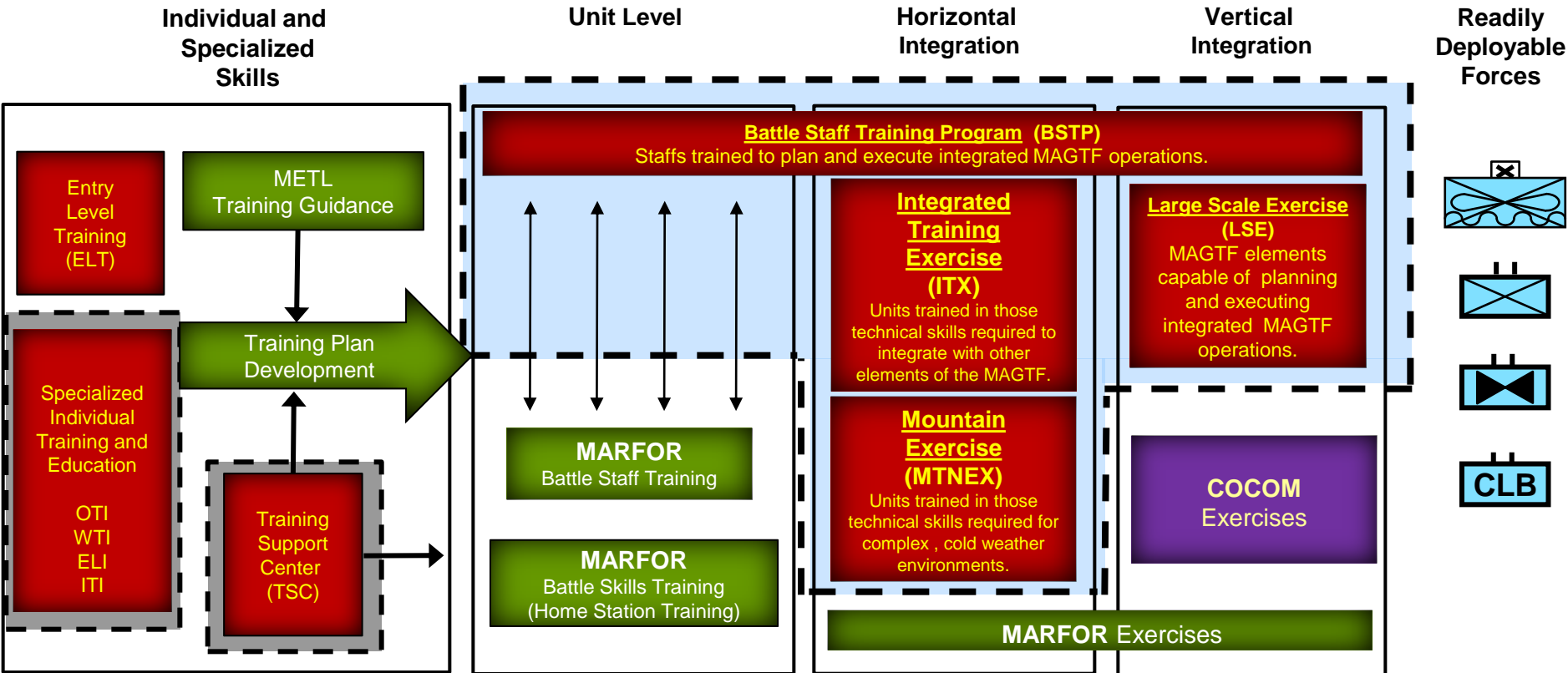
CLNC – Lance Jeffrey/ joseph.m.jeffrey@usmc.mil

MCBH/MCB Japan – Ed Green/ edward.green2@usmc.mil



TSC support to the MAGTF-TP

(TECOMO 3502.2 dtd 26 Feb 2013)



Legend

MARFOR Sponsored

Service Sponsored

Joint Sponsored

MAGTF Training Program

UNCLASSIFIED



Sample Menu



Unit

- METs / METL / Trng Objectives
- Size of Exercise Force (bn, co, plt, etc)
- Exercise Format
 - Lane / continuous / etc
- Timeframe and Length of Trng Event
- Trng Environment (setting, situation, threat)
- Desired Support
 - Role Players
 - Battlefield effects
 - Weapons
 - Training systems
- Exercise Execution
 - ExCon
 - Evaluation

ESB / TSC

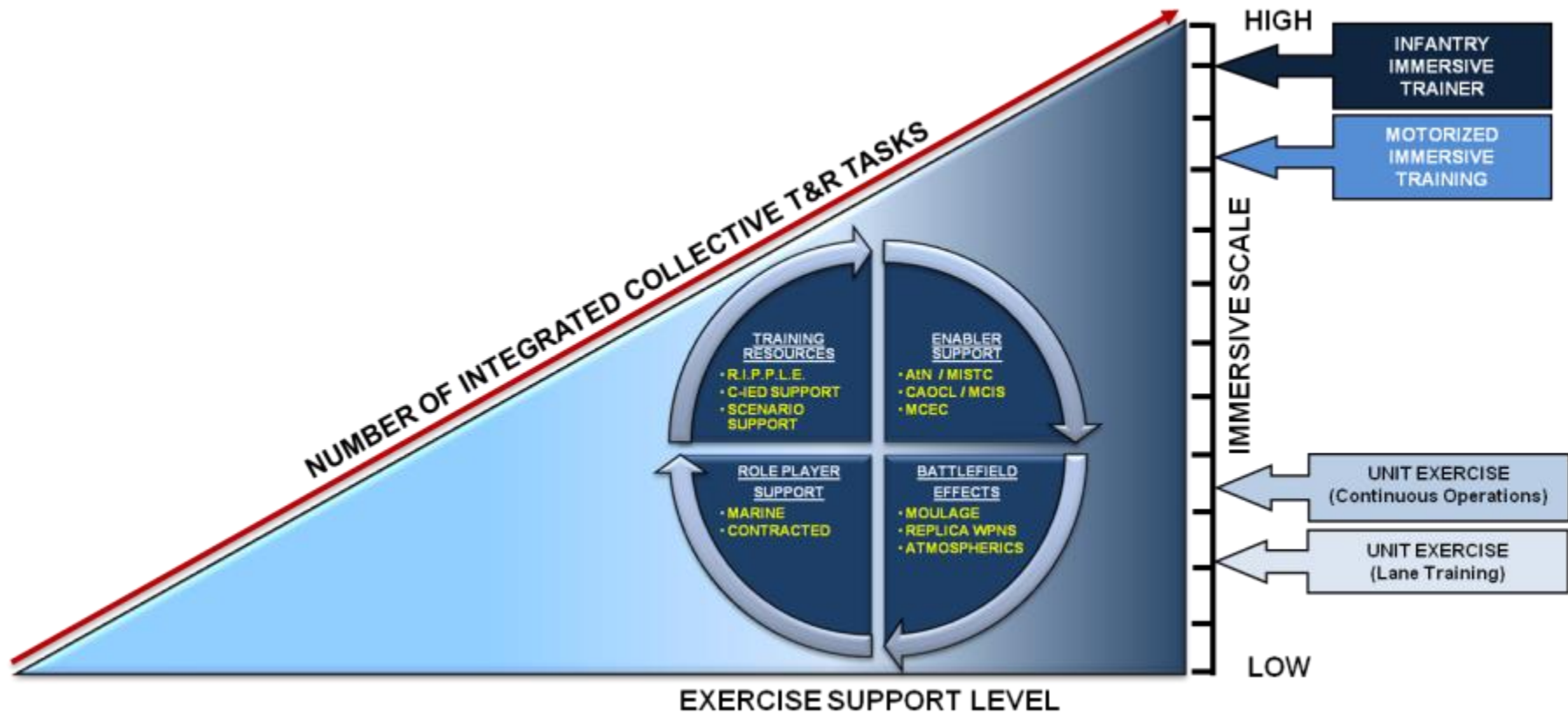
- Intel Products
- Training Event Menu
- Exercise Support Products
 - RP Bios and Genograms
 - Event Thread Diagram
 - Master Scenario Event List (MSEL)
 - ID cards, passports, arrest warrant
- BFX / Atmospheric
- SOW Development
- ITESS support
- Trng Area / Range info
 - SPINS
 - Safety and execution checklists
 - Base access requirements (RPs/BFX)
- ExCon coord / assistance
- Evaluation checklist builds



Immersive Training Scale



Immersive training is a combination of **training resources** to help replicate a realistic environment, enemy threats and **unit collective tasks** that create realistic, complex situations.



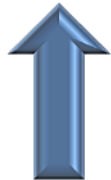
Unit Commander Training Guidance

EXERCISE MISSION: At H-hour on D-day, 1st platoon conducts motorized attack IOT clear the platoon zone and secure OBJ - A.

TRAINING FOCUS: Focus on platoon mounted attacks in a hybrid threat / Desert Environment.

Key Tasks:

- PLT C2 during MVMNT,
- Engagement battle drills – w/ SECs / SQDs
- Providing mutual support during Fire & Mvmnt; and lateral communications between squads during mutual target engagements.



Products to Training Unit

BACKGROUND / SITUATION

- IPB
- SCENARIO

ORDERS SHELL

- WARN-O / FRAG-O

ASSESSMENT TEMPLATE

- PERFORMANCE EVAL CHECKLIST

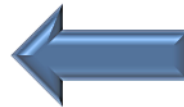
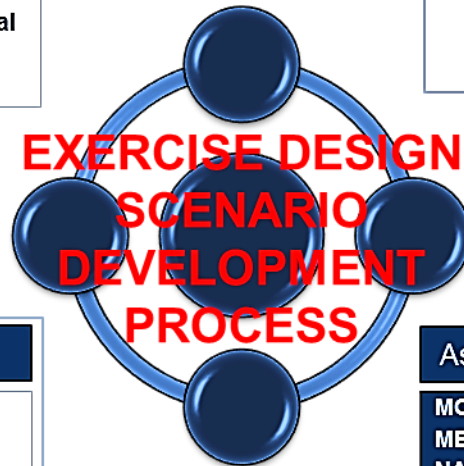
Products to System Operators / Exercise Control

THREAT INFORMATION

- UNIT TYPE
- CAPABILITY
- DOCTRINE
- TASKS & PURPOSE

EXCON / MSEL

- SPECIFIC ACTIONS TO BE PRESENTED TO THE TRAINING UNIT



Identifying a Unit's Mission Essential Task List (METL)

INFANTRY BATTALION METL

MET 1: MCT 1.3.2 CONDUCT AMPHIBIOUS OPERATIONS

MET 2: MCT 1.6.1 CONDUCT OFFENSIVE OPERATIONS

MET 3: MCT 1.6.4 CONDUCT DEFENSIVE OPERATIONS

MET 4: MCT 1.6.6.9 CONDUCT STABILITY OPERATIONS



Association of METL to E-Coded Events in T&R Man

MCT 1.6.1

MET2: CONDUCT OFFENSIVE OPERATIONS
NAVMC 3500.44B

INF-C2-6003	Conduct Planning
INF-C2-6007	Execute Command & Control

INF-MAN-6001 Conduct Ground Attack

CHAINED

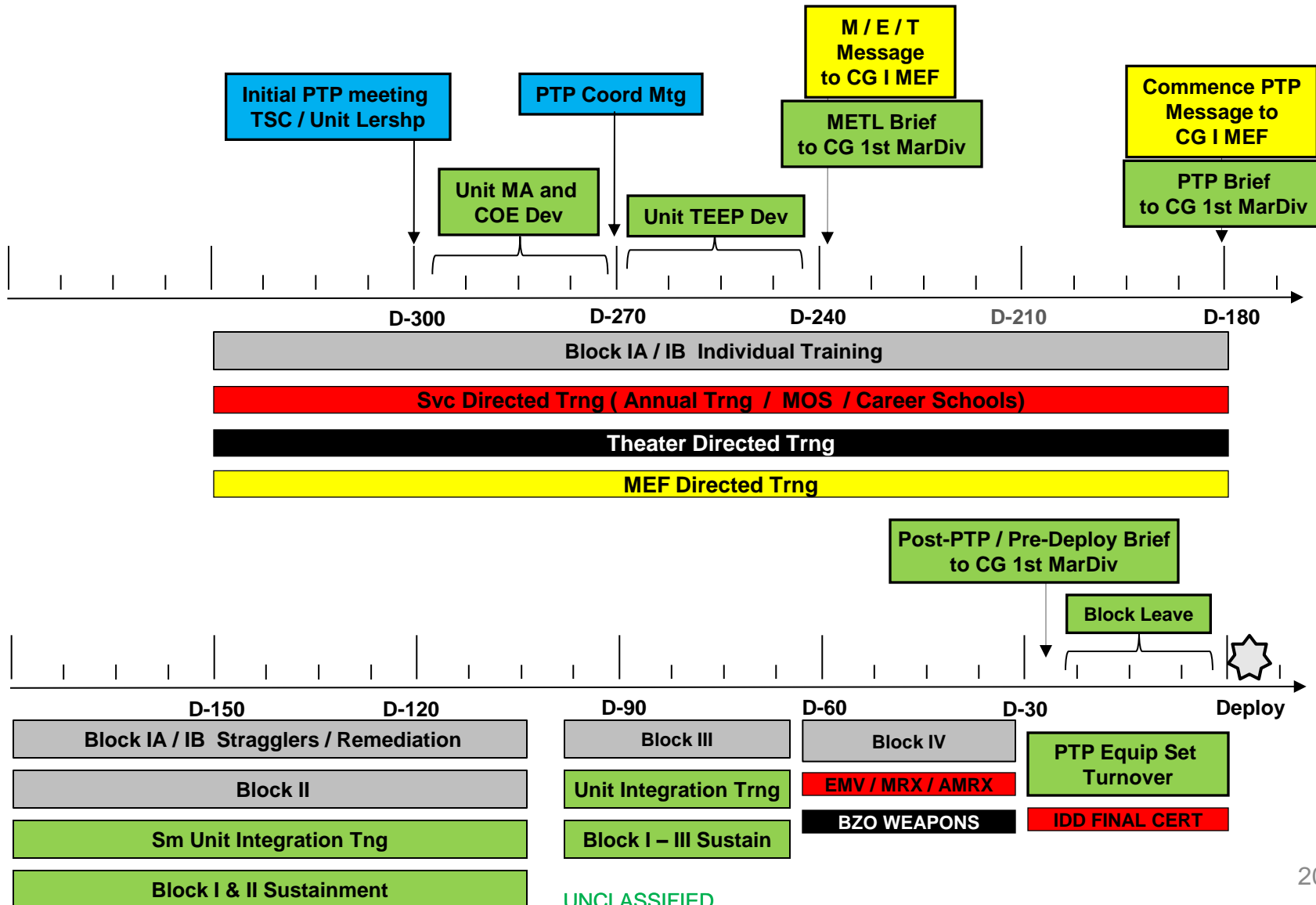
INF-MAN-5001	Conduct Ground Attack
--------------	-----------------------

RELATED EVENTS

INF- ANTI-5001	Provide Offensive Fires
INF-FSPT-5001	Integrate fire
INF-MGUN-5003	Occupy Fire Position
INF-ASLT-5001	Provide Direct Fires
INF-MAN-5207	Support by Fire / Overwatch
INF-ASLT-5003	Provide Mobility
INF-MGUN-5001	Provide Offensive Fires

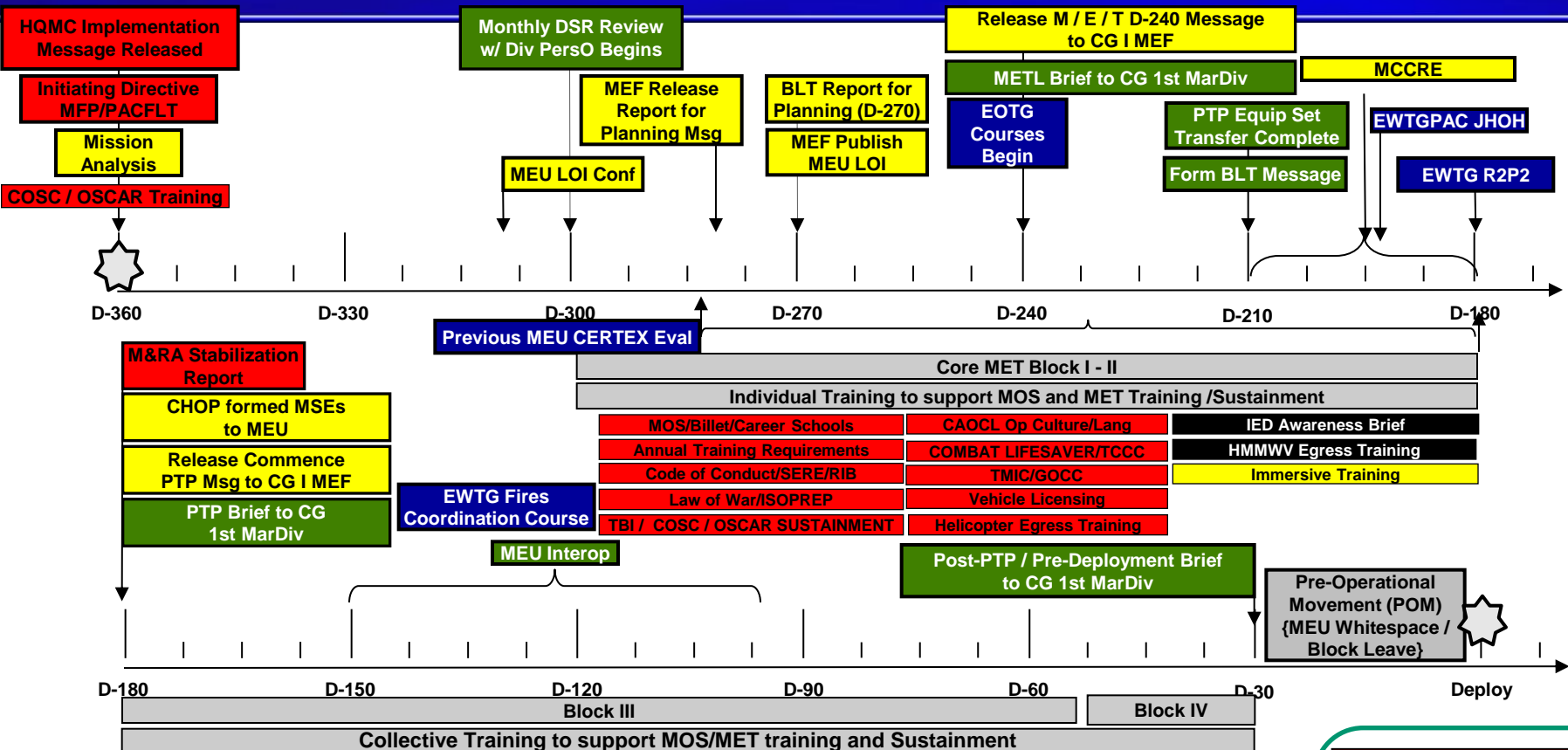


Sample PTP timeline





SoCal MEU Infantry Battalion Force Management Timeline



EOTG Courses	
RAID LDRS CSE (2 WK)	ASSAULT CLIMBER (5 WKS)
MOTORIZED RAID (1 WK)	NLW (1 WK)
MECH RAID (1 WK)	CRISIS RESPONSE (1 WK)
HELO RAID (1 WK)	DYNAMIC ASSAULT (5 WKS)
LAR/CAAT RAID (1 WK)	URBAN R&S (3 WKS)
TRAP (2 WKS)	URBAN SNIPER (3 WKS)
SECURITY ELEMENT (3 WKS)	

RUT	VBSS	PMINT	C2X	CERTEX
-----	------	-------	-----	--------

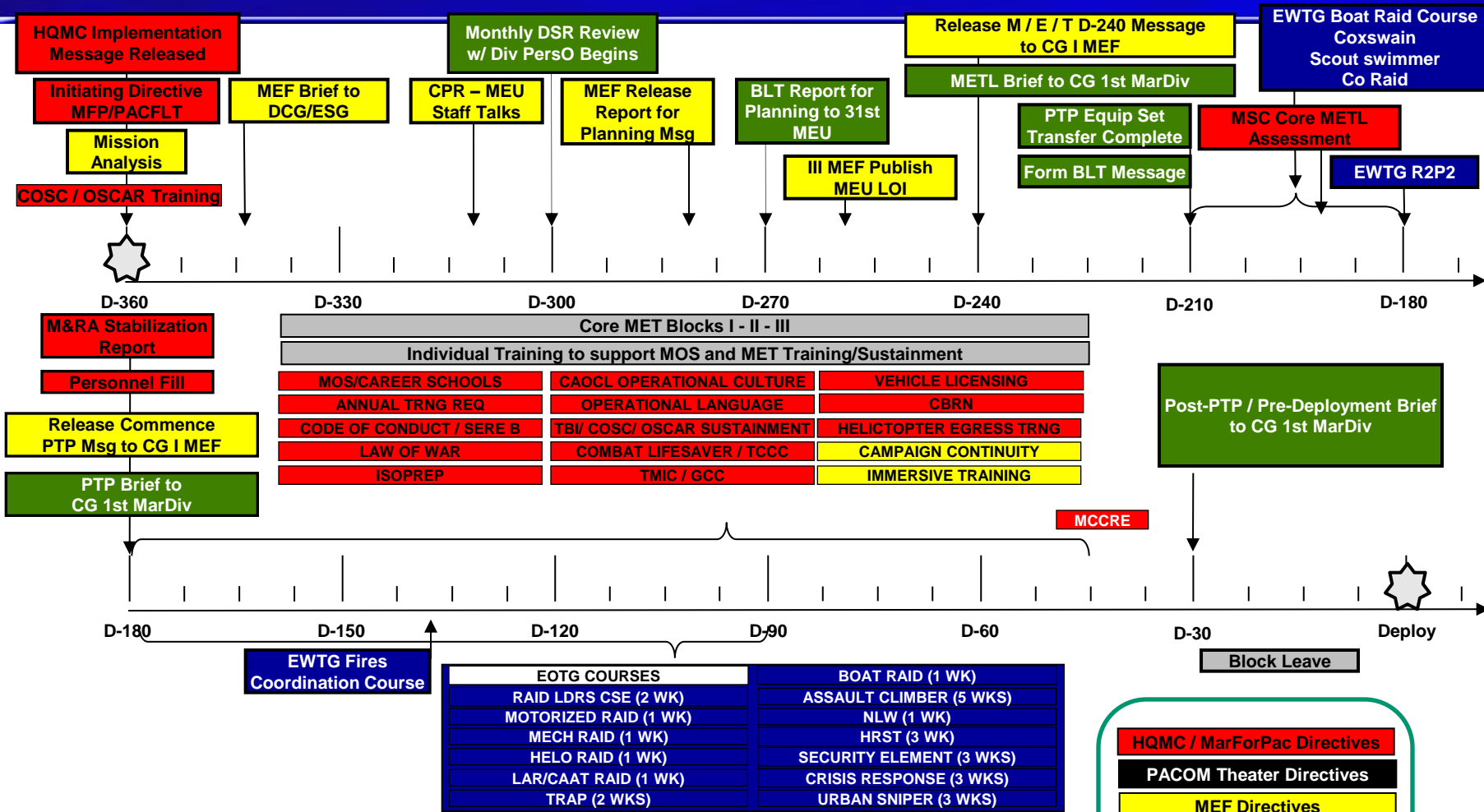
- Key Points:**
- All CENTCOM Theater-specific training events are subject to availability; OEF units have priority
 - Some EOTG courses may begin before D-180
 - Battalions will complete Core MET Assessment prior to CHOP to MEU
 - VBSS training includes recon platoon(s) and security platoon (from rifle company)
 - The next BLT in the cycle will evaluate CERTEX and provide 100% of MEU/TEG support
 - CERTEX schedule will be synchronized with follow-on MEU CE and BLT
 - All individuals involved in frequent over-water flights will complete helicopter egress training
 - Each rifle company and applicable attachments will complete a Company Raid Crs

- HQMC / MarForPac Directives
- MARCENT/Theater Directives
- MEF Directives
- 1st MarDiv Directives
- EWTG & EOTG PTP Related Events
- Unit Action

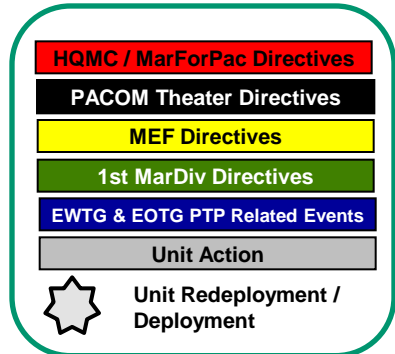
★ Unit Redeployment / Deployment



31st MEU Infantry Battalion Force Management Timeline

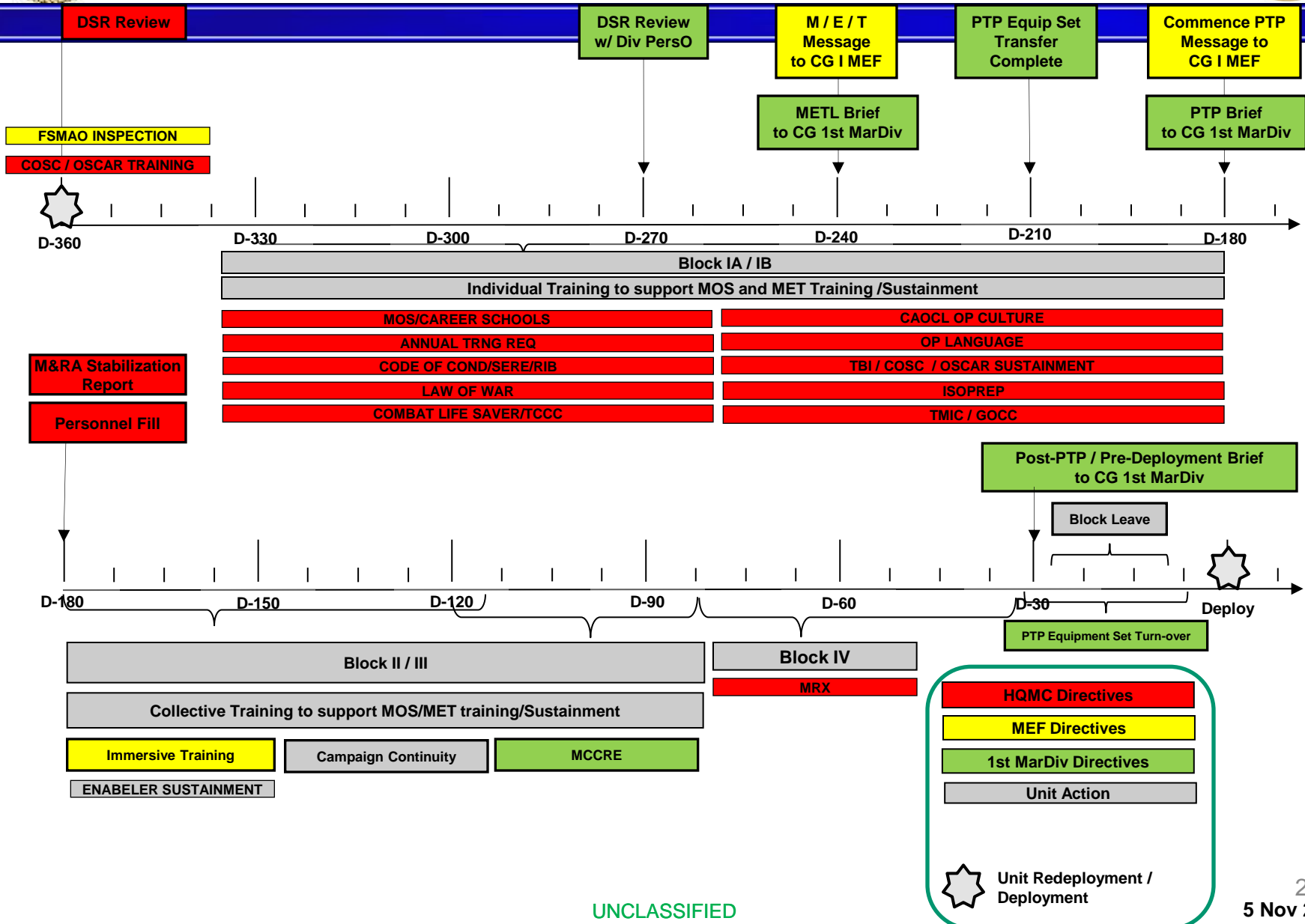


- Key Points:**
- All CENTCOM Theater-specific training events are subject to availability; RSM units have priority
 - Some EOTG courses may begin before D-180
 - Battalions will complete Core MET Assessment prior to deployment
 - Key personnel may be required to travel for R2P2 training with 31st MEU staff during PTP
 - Some equipment may be required for deployment (e.g. NMCI assets)
 - Security platoon (from rifle company) may be required to travel with ADVON for VBSS training
 - D-180 GCE will be Block I and II complete



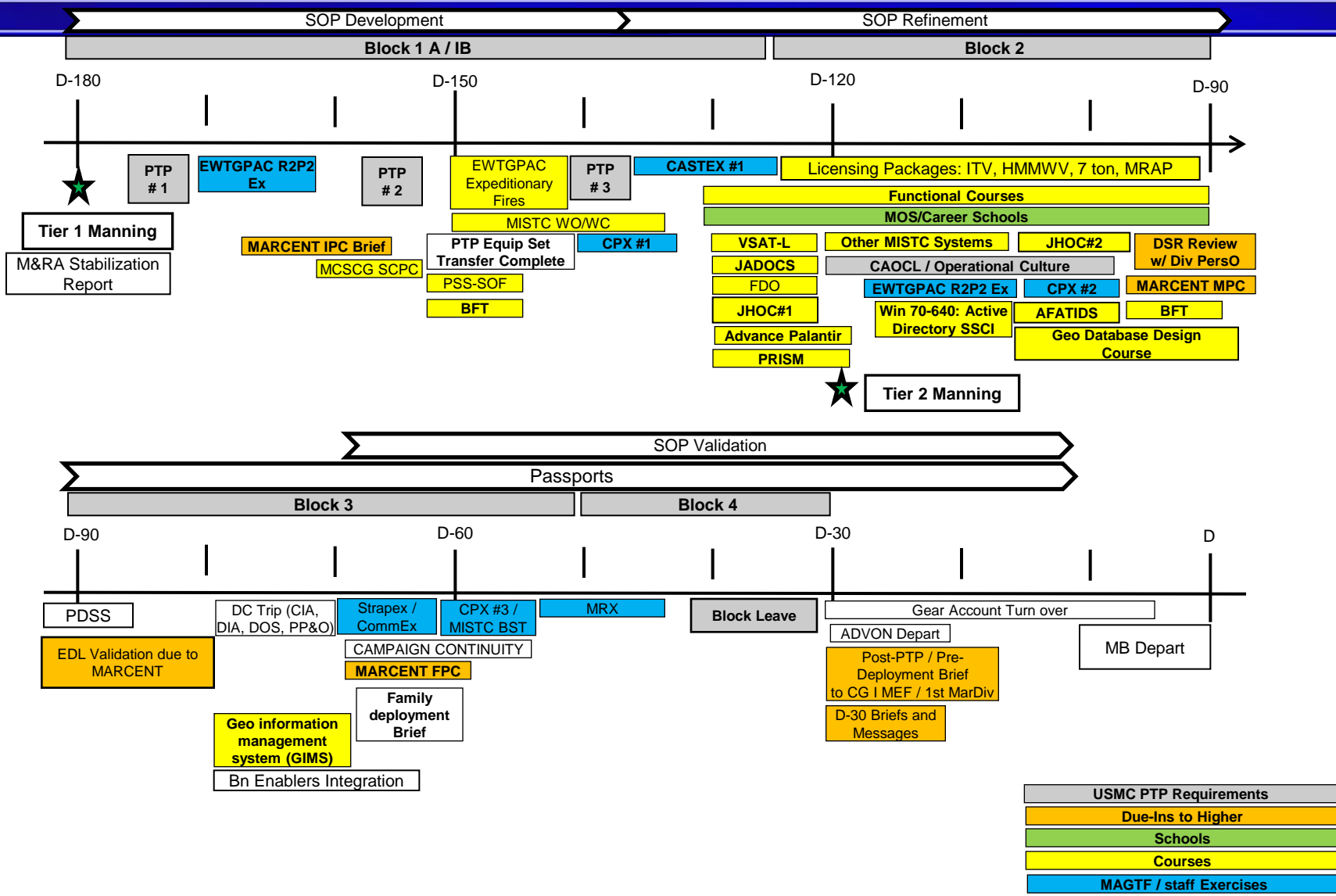


UDP Infantry Battalion Force Management Timeline



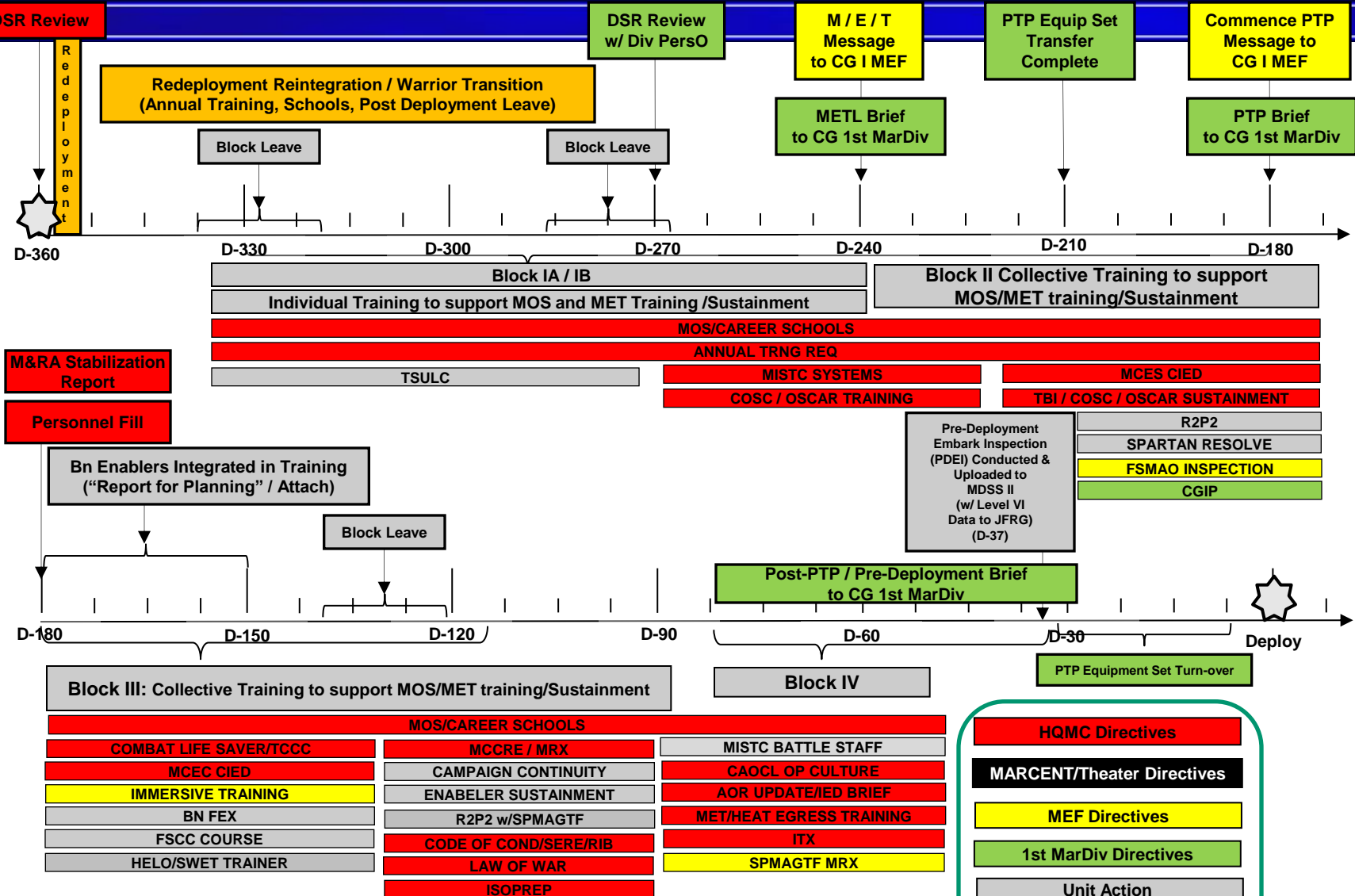


SPMAGTF-CR-CC CE PTP Design





SPMAGTF-CR- CC GCE Force Management Timeline



- HQMC Directives
- MARCENT/Theater Directives
- MEF Directives
- 1st MarDiv Directives
- Unit Action

☆ Unit Redeployment / Deployment

UNCLASSIFIED



OEF Infantry Battalion Force Management Timeline

